



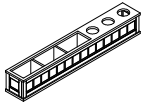
## Beadboard Snack bar base and hutch

### Pre-assembly:

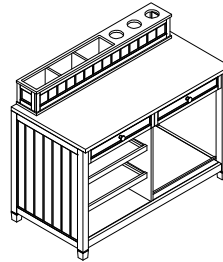
- Please read all instructions before beginning assembly.
- Two-adult assembly is recommended.
- Save all packing materials until assembly is complete to avoid accidentally discarding smaller parts or hardware.

### Parts included:

A – Hutch – 1 pc

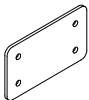


B – Base – 1 pc



### Hardware Included:

C – Mending Plate 70x40mm – 2 pcs



D – Phillips Head Screw 7x12mm – 8 pcs

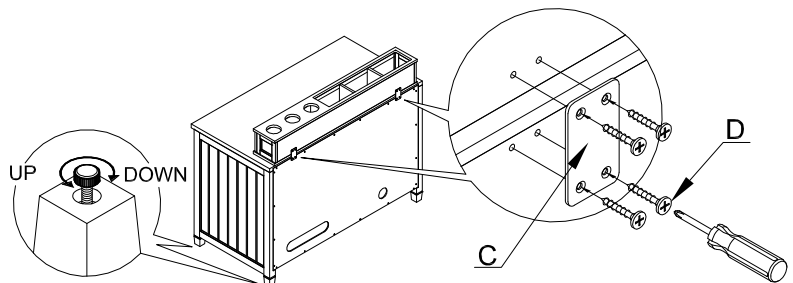
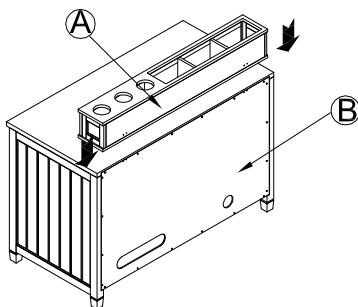


### Tools Required:

Phillip Head Screwdriver (not included). Do not use power drill as it may cause parts cracking.

### Assembly:

1. Lift up Snack bar Hutch (A) and put it on top of Snack bar base (B). Align Hutch (A) and Base (B) center to center. Place Mending Plate (C) over pre-drilled holes at the back of the Base (B) and Hutch (A), as shown below. Insert Phillips Head Screws (D) through pre-drilled holes in Mending Plate (C) into pre-drilled holes at the back of Base (B) and Hutch (A), loosely tighten Philips Head Screws (D) with a Philips Head Screwdriver. Repeat on the other side of snack bar for the other Mending Plate (C). Once all screws are in place, fully tighten them.
2. Adjust recessed leveler located at the bottom of each leg to balance the unit if necessary.
3. Hardware should be checked periodically for tightness.



### Care Instructions:

- Avoid direct sunlight and excessive temperatures.
- Dust often using a clean, soft, dry and lint-free cloth.
- Slightly moisten cloth with water. A damp cloth holds dust and prevents scratching.
- Waxing is not recommended on lacquered finish.